

Light efficiency:

48 Lumen/Watt

Light quality:

CRI: 88.1

Color temperature:

8368 K

Output: 18339 lm

Peak: 138447 cd

Power: 384 W

PF: 1.0

No photo

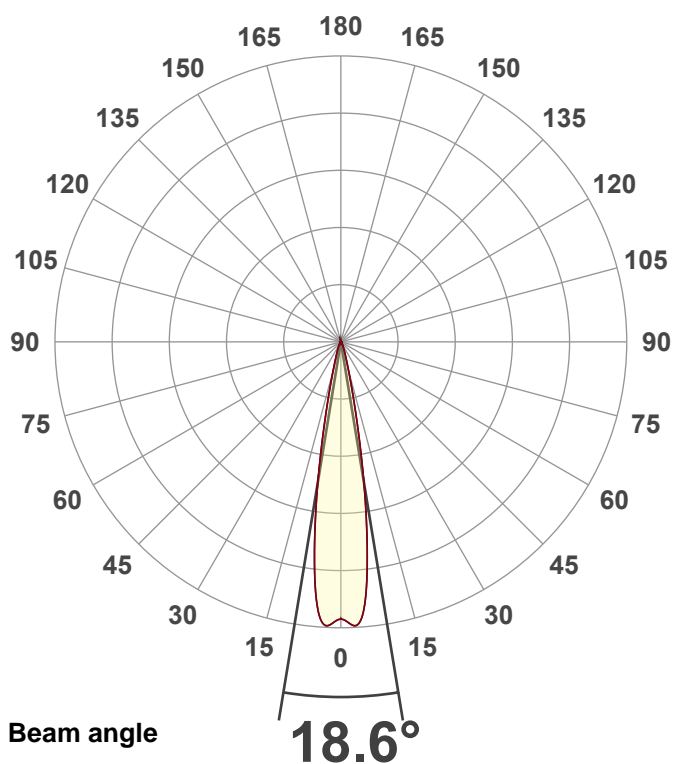
Product name:

40 Hex Panel IP (Full On,8000K)

Item number:

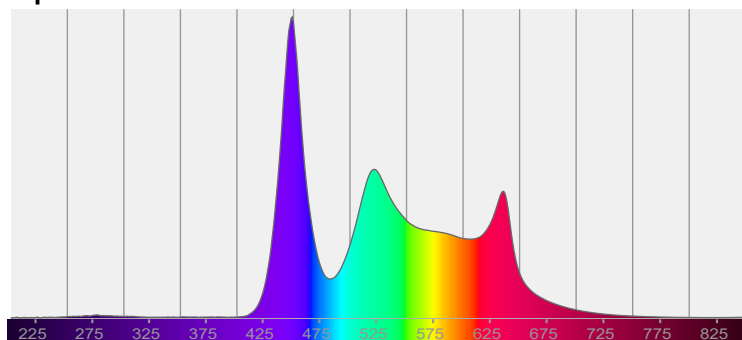
Date and time:

10/9/2025 3:39:38 PM



CIE 1931
x: 0.293
y: 0.299

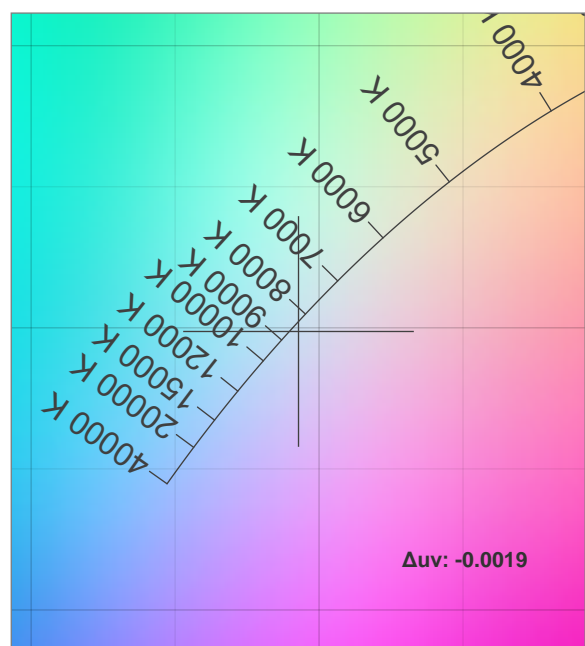
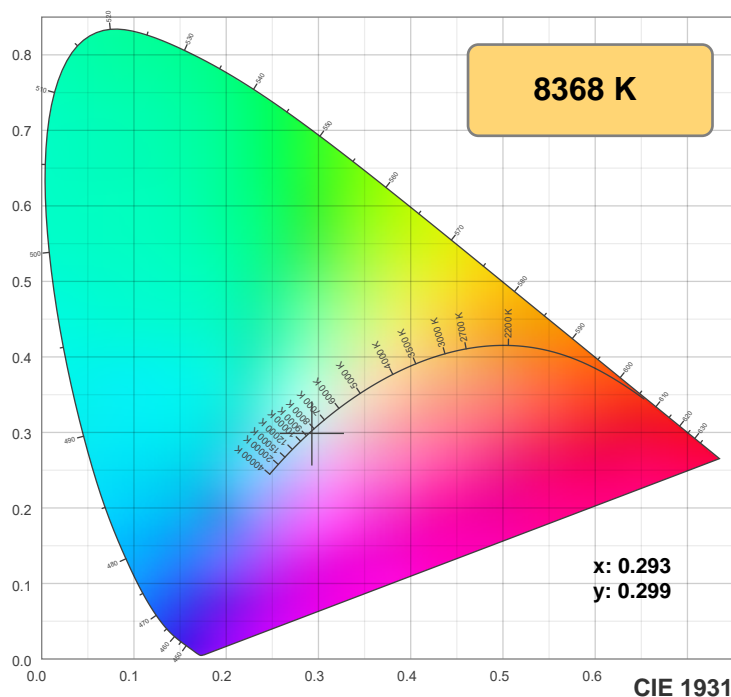
Spectra



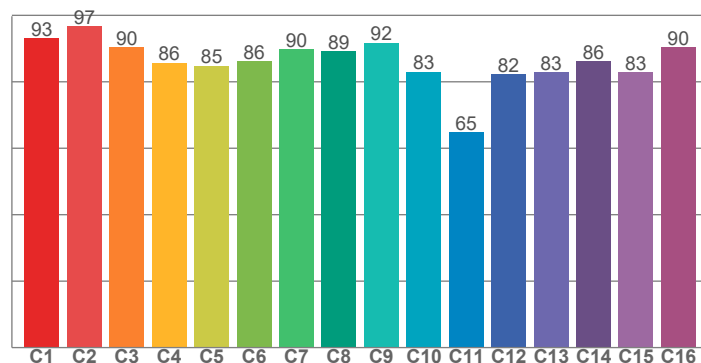
Power

Voltage: 116 V
Current: 3.31 A
Frequency: 0 Hz

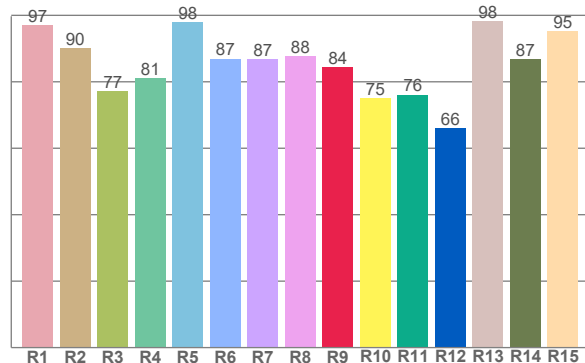
Color details



TM-30: 86.5



CRI: 88.1 (R1-R8)



CRI R values, only R1-R8 are used to calculate final CRI value

R1	R2	R3	R4	R5	R6	R7	R8	R9	R10	R11	R12	R13	R14	R15
97.1	90.1	77.2	81.2	97.8	86.9	86.7	87.6	84.4	75.1	76.1	66.0	98.2	86.7	95.3

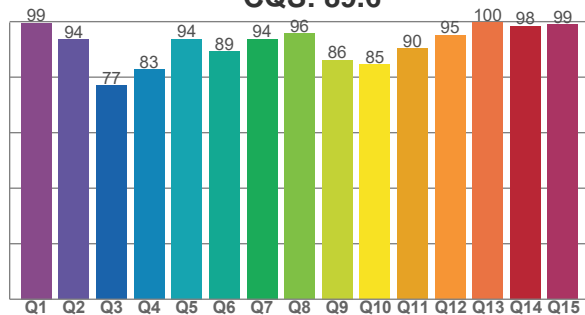
TM30 C values, 16 binned values out of total of 99 C values

C1	C2	C3	C4	C5	C6	C7	C8	C9	C10	C11	C12	C13	C14	C15	C16
93.1	96.8	90.4	85.7	84.8	86.2	89.9	89.3	91.7	83.0	64.7	82.2	82.8	86.1	82.9	90.4

CQS Q values

Q1	Q2	Q3	Q4	Q5	Q6	Q7	Q8	Q9	Q10	Q11	Q12	Q13	Q14	Q15
99.5	93.5	77.0	82.7	93.8	89.3	93.7	95.7	86.2	84.5	90.3	95.1	99.7	98.3	98.9

CQS: 89.6



Color parameters

Color temperature	Color rendering index	Red component	Color fidelity	Color gamut	Color quality scale	Color coordinate cie 1931	Color coordinate cie 1931	Color coordinate	Color coordinate	Color deviation from black body
CCT	CRI	CRI R9	TM30 Rf	TM30 Rg	CQS	x	y	u	v	Δuv
8368 K	88.1	84.4	86.5	106.3	89.6	0.293	0.299	0.195	0.299	-0.0019

TM-30 details

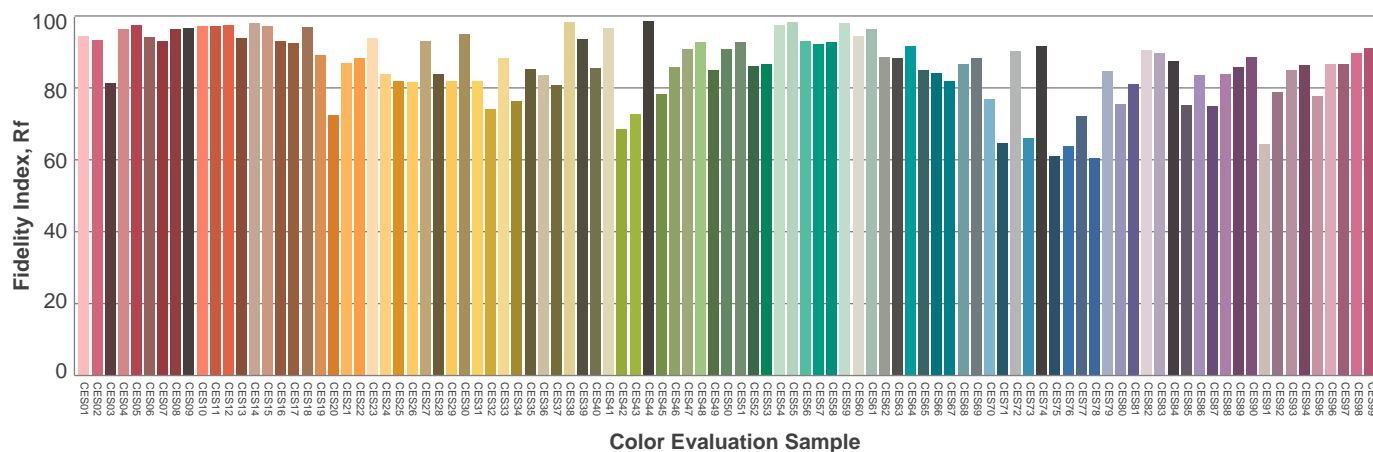
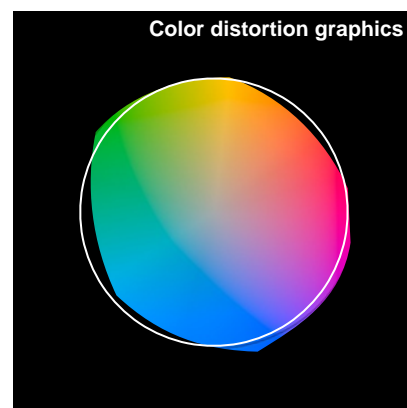
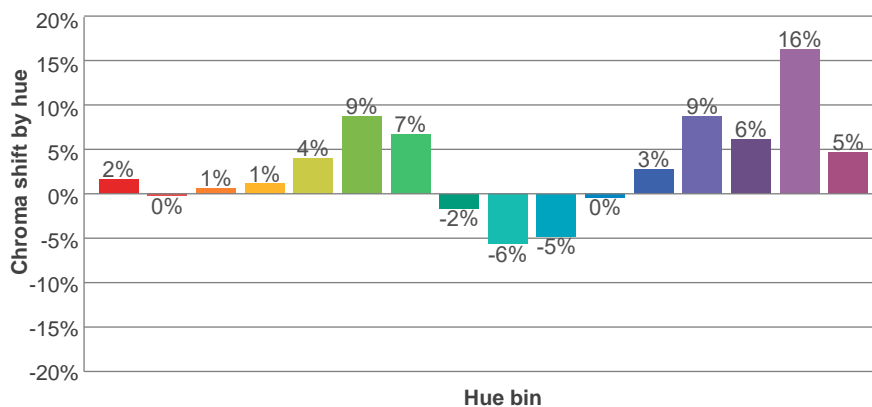
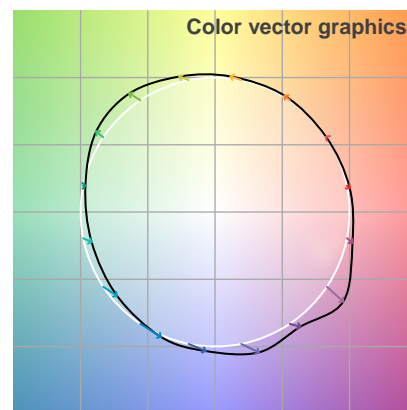
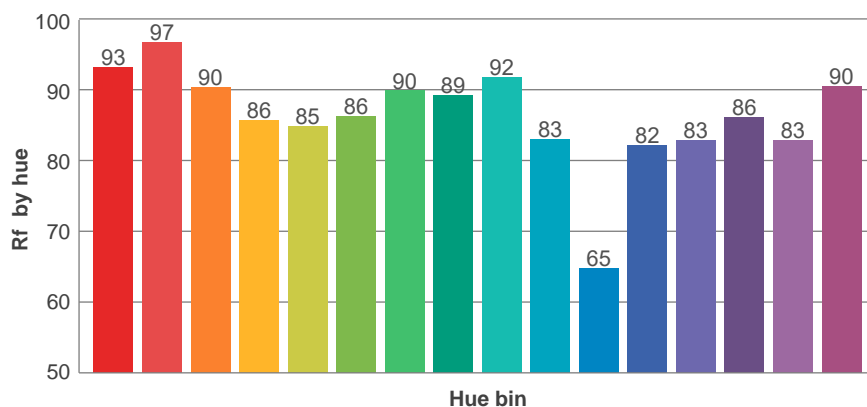
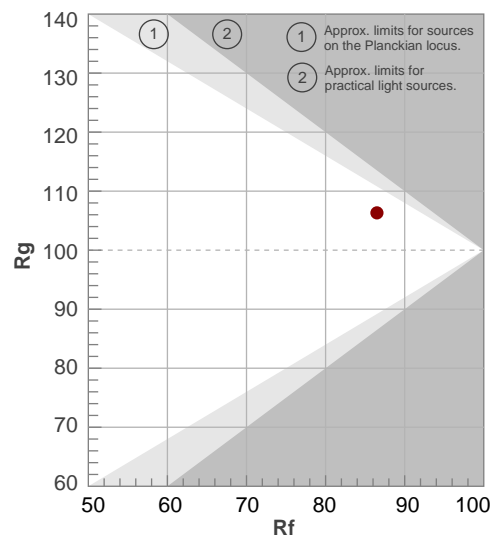
Rf 86.5

Fidelity index Rf

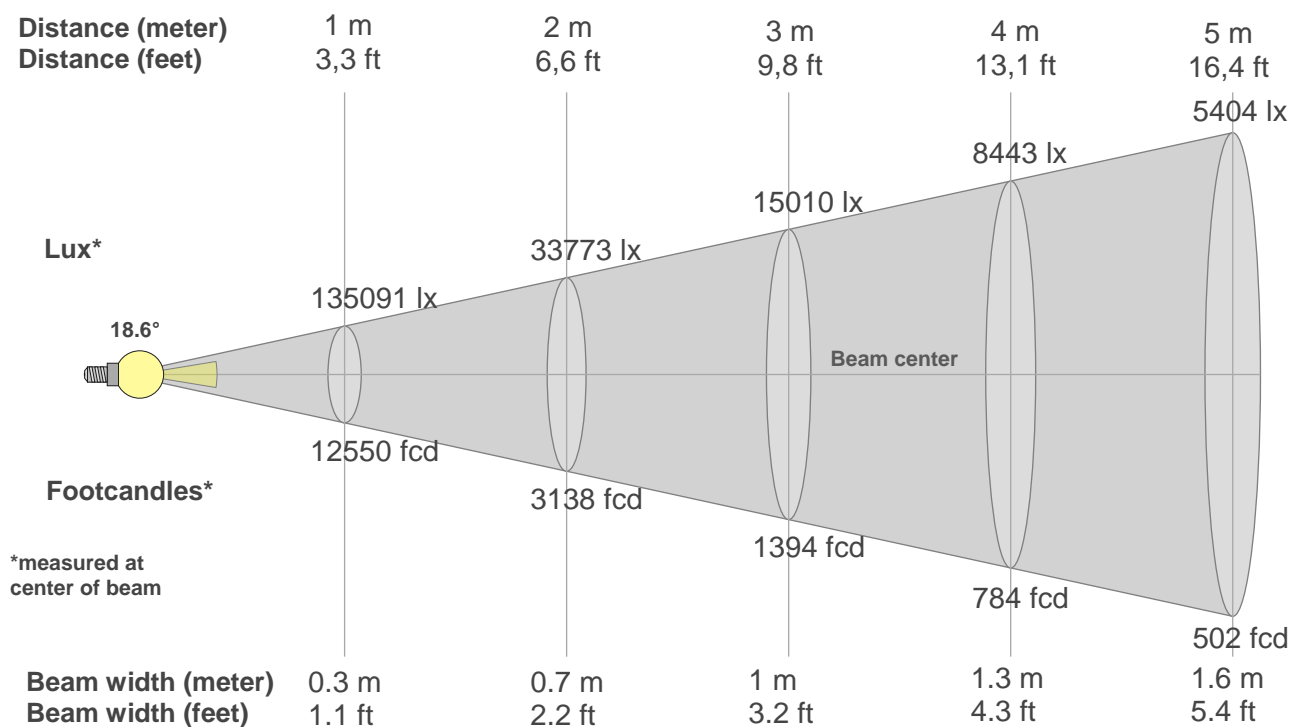
Rg 106.3

Gamut index Rg

Hue Bin	R _f	Shifts (%)	
		Chroma	Hue
1	93	2%	-2%
2	97	0%	1%
3	90	1%	5%
4	86	1%	8%
5	85	4%	6%
6	86	9%	4%
7	90	7%	-1%
8	89	-2%	0%
9	92	-6%	4%
10	83	-5%	11%
11	65	0%	18%
12	82	3%	13%
13	83	9%	12%
14	86	6%	5%
15	83	16%	-2%
16	90	5%	-2%



Beam details



Beam intensities from 1-20m

1m	2m	3m	4m	5m	6m	7m	8m	9m	10m	11m	12m	13m	14m	15m	16m	17m	18m	19m	20m
3.3ft	6.6ft	9.8ft	13.1ft	16.4ft	19.7ft	23ft	26.2ft	29.5ft	32.8ft	36.1ft	39.4ft	42.7ft	45.9ft	49.2ft	52.5ft	55.8ft	59.1ft	62.3ft	65.6ft
135091lx	33773lx	15010lx	8443lx	5404lx	3753lx	2757lx	2111lx	1668lx	1351lx	1116lx	938lx	799lx	689lx	600lx	528lx	467lx	417lx	374lx	338lx
12550.4 fcd	3137.6 fcd	1394.5 fcd	784.4 fcd	502 fcd	348.6 fcd	256.1 fcd	196.1 fcd	154.9 fcd	125.5 fcd	103.7 fcd	87.2 fcd	74.3 fcd	64 fcd	55.8 fcd	49 fcd	43.4 fcd	38.7 fcd	34.8 fcd	31.4 fcd

Intensities in 0° c-plane

0°	1°	2°	3°	4°	5°	6°	7°	8°	9°	10°	11°	12°	13°	14°	15°	16°	17°	18°	19°
135k	136k	138k	138k	136k	130k	120k	105k	90k	74k	59k	45k	33k	25k	19k	14k	11k	9k	8k	6k
100%	101%	102%	102%	101%	96%	89%	78%	67%	55%	43%	33%	25%	18%	14%	11%	8%	7%	6%	5%

Intensities in 90° c-plane

0°	1°	2°	3°	4°	5°	6°	7°	8°	9°	10°	11°	12°	13°	14°	15°	16°	17°	18°	19°
135k	136k	138k	138k	136k	130k	120k	105k	90k	74k	59k	45k	33k	25k	19k	14k	11k	9k	8k	6k
100%	101%	102%	102%	101%	96%	89%	78%	67%	55%	43%	33%	25%	18%	14%	11%	8%	7%	6%	5%

Intensities in 180° c-plane

0°	1°	2°	3°	4°	5°	6°	7°	8°	9°	10°	11°	12°	13°	14°	15°	16°	17°	18°	19°
135k	136k	138k	138k	136k	130k	120k	105k	90k	74k	59k	45k	33k	25k	19k	14k	11k	9k	8k	6k
100%	101%	102%	102%	101%	96%	89%	78%	67%	55%	43%	33%	25%	18%	14%	11%	8%	7%	6%	5%

Intensities in 270° c-plane

0°	1°	2°	3°	4°	5°	6°	7°	8°	9°	10°	11°	12°	13°	14°	15°	16°	17°	18°	19°
135k	136k	138k	138k	136k	130k	120k	105k	90k	74k	59k	45k	33k	25k	19k	14k	11k	9k	8k	6k
100%	101%	102%	102%	101%	96%	89%	78%	67%	55%	43%	33%	25%	18%	14%	11%	8%	7%	6%	5%

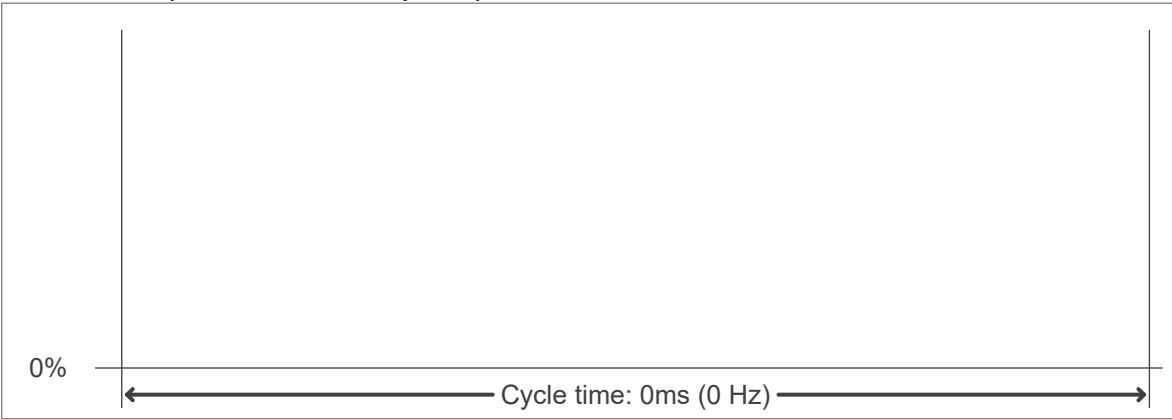
Beam angle 50%	Field angle 10%	Cutoff angle 2,5%	Intensity ratio in 120° cone	Intensity ratio in 90° cone
18.6°	30.3°	46.6°	96.4%	93.5%



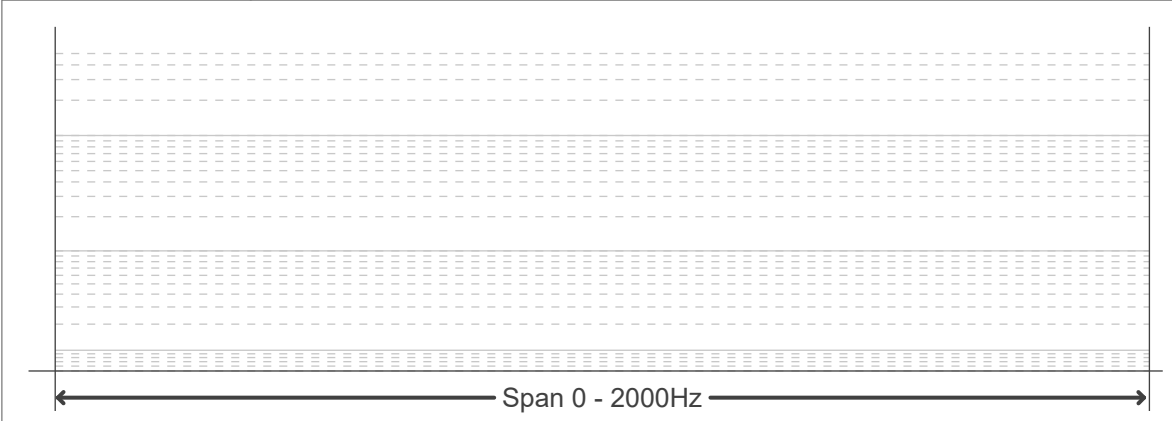
Flicker curve (complete sampled flicker signal)



Flicker frame (frame of one flicker period)



Flicker FFT (frequency scope of flicker curve)



Flicker results:

Flicker frequency:		n/a Hz	
Flicker index:	n/a	JA8/10 40Hz	n/a %
Flicker percentage:	n/a %	JA8/10 90Hz	n/a %
SVM: (Visual flicker)	n/a	JA8/10 200Hz	n/a %
PstLM	n/a	JA8/10 400Hz	n/a %
Mp	n/a	JA8/10 1000Hz	n/a %

Flicker conditions:

Sample rate:	n/a samples/second
--------------	--------------------